

ROOMS

TRAVEL BETTER THANKS TO CIRCULAR ECONOMY

Tools to Support the Adoption of
Circular Economy Practices in
Tourist Accommodations.



Reduce resource consumption, particularly
water and plastic



Minimize product waste



Extend the lifespan of goods and
reduce landfill



Reduce the environmental impacts associated
with room linen management



Optimize residual materials management

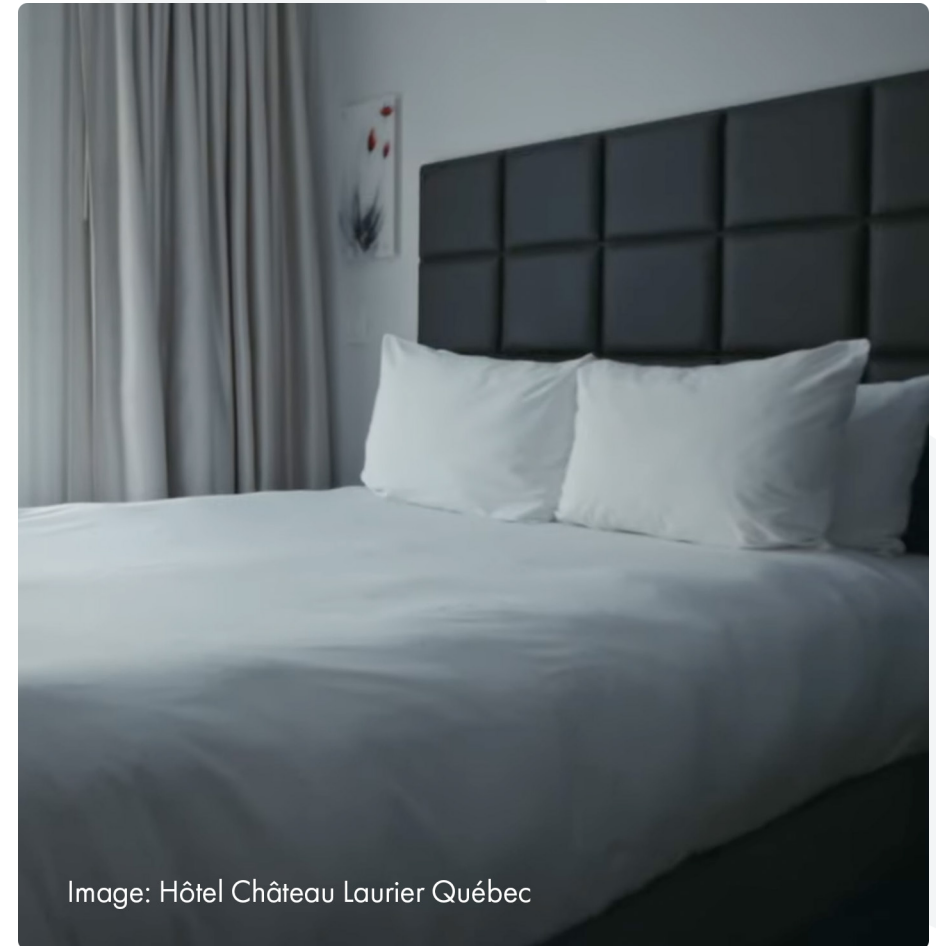


Image: Hôtel Château Laurier Québec

BEST PRACTICES

1

Reduce at the source (procurement and operations)



Replace single-use water bottles with reusable containers

- Provide reusable glasses in the room with safe drinking water sign, or a carafe in the room with a filtered water dispenser in the corridor
- If this is not possible (e.g., hotel chain requirement), place water bottles in the refrigerator to keep them out of sight (this helps reduce water bottle consumption)



Replace individual hygiene products (e.g., hand soap, lotion, shampoo, conditioner, shower gel) with refillable, durable, and heavy-duty dispensers

- Reusable containers should be refilled using larger recyclable or returnable containers (over 4 litres), meaning the containers are exchanged with the supplier for reuse or refilling



Remove single-serve coffee machines from each room and replace them with a built-in coffee grinder in the lobby (with reusable or returnable cups), then compost the coffee grounds.

If not desired:

- Ensure coffee pods are recycled if the company offers such a program
- Offer condiments in limited quantities (e.g., sugar, brown sugar) to reduce waste, and provide a washable spoon instead of a stir stick



Reorganize housekeeping procedures for private spaces to increase the time between cleaning and sheet and towel change

- Place a “Please clean the room” sign for stays under one week
- Add a sign asking guests to leave towels on the floor or in the bathtub for changing during the stay



Use dark towels and sheets to reduce replacements when stained (less visible)

- Note that there may be a risk of dark fabrics fading if they are washed in a machine where bleach is also used.



Install faucet aerators and replace showerheads with low-flow models to reduce water consumption

- Choose an aerator faucet that reduces flow to less than 5 litres per minute (in French only) (a faucet without an aerator consumes approximately 13 litres per minute)
- When purchasing new faucets, choose models with a flow rate of 2 to 3.8 litres per minute (in French only)
- Favour showerheads with a maximum flow of 6.6 litres per minute (in French only)
(Watersense-certified models have a flow of 7.5 litres per minute)
- When replacing a toilet, choose a model with a maximum flush volume of 4.8 litres per flush (in French only). For dual-flush toilets, ensure that the average flush volume of both flushes is equivalent to 4.8 litres per flush (choose a Watersense-certified model)



Remove amenity kits from rooms (e.g., sewing, shaving) and provide them only upon request at the front desk

- Replace single-use makeup removal kits with reusable dark-coloured washcloths that can be embroidered (e.g., for makeup)



Replace batteries in room doors or remote controls with rechargeable ones (rental service available)



Use a QR code linked to the establishment's website to share stay information instead of printing it in each room

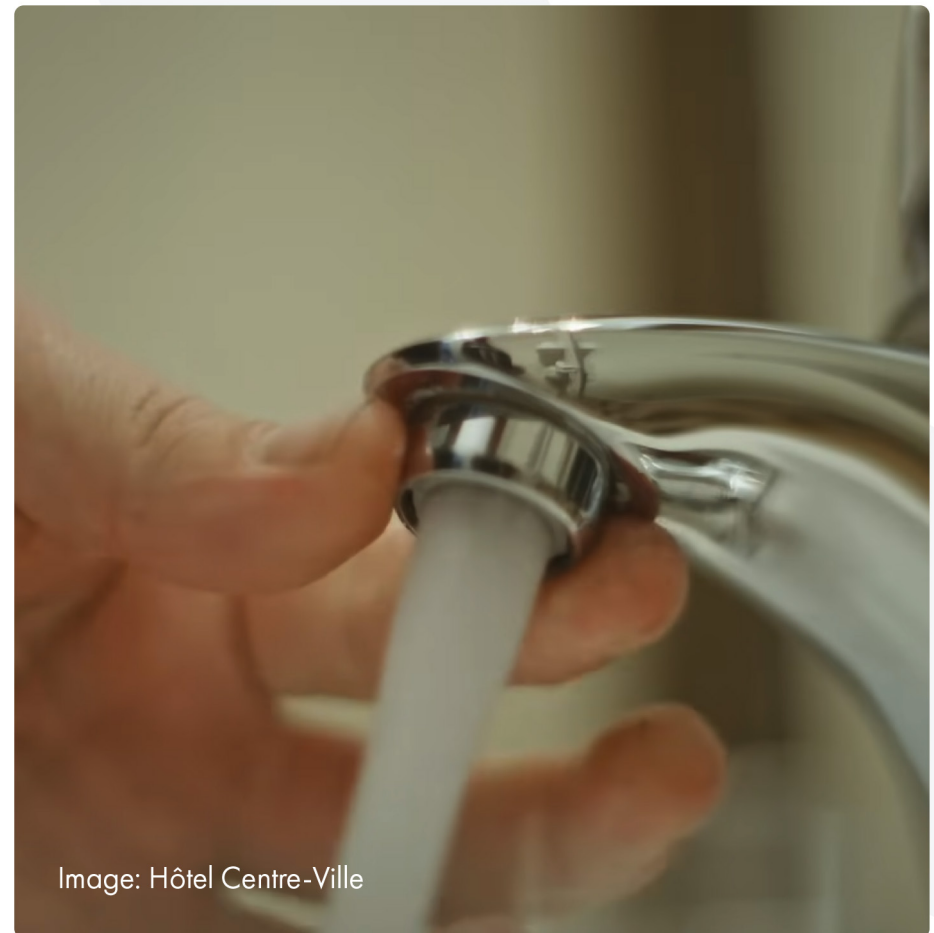


Image: Hôtel Centre-Ville

2

Reuse, donate, or resell



Repurpose bedroom linens (towels or sheets) into dishcloths or pillowcases to give them a second life



Create a registry of local organizations accepting donations and ensure that items to be replaced are sent to them

- Ask organizations, garages, hair salons, homeless shelters, or animal protection societies (SPAs) if they can collect furniture or bedding (e.g., sheets, towels)
- Contact your regional symbiosis to evaluate options for donating various items (e.g., lost and found items)



Implement a system to collect used soaps for the production of new ones

3

Recycle and compost



Provide a blue recycling bin in each room, next to the waste bin, for recyclable materials



Provide an organic waste bin in the corridors on each floor, with a note in the rooms indicating its location



Add waste sorting posters in each room with icons of the materials/items found in the rooms (e.g., toilet paper roll packaging, soap box, wine bottle, beer can, compostable dishware)



Adjust housekeeping procedures, including adapting carts and ensuring materials are transported to the correct bins

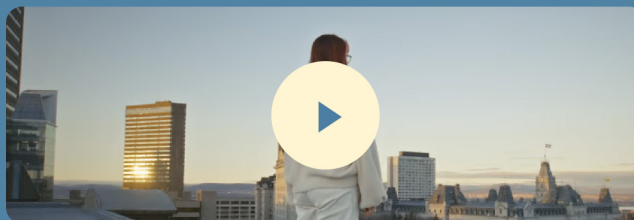
SAMPLE CASES

[View all videos](#)



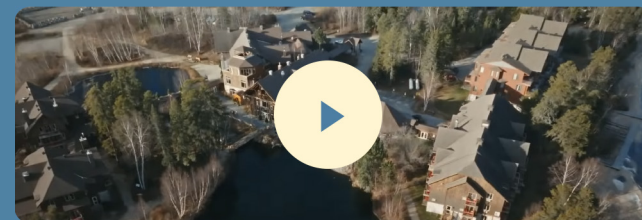
Hôtel & Spa Le Germain Charlevoix (English subtitles available)

- Replacement of single-use slippers provided in VIP rooms with washable models, made by a Quebec company from recycled materials
- A proposal for guests to forego room cleaning in exchange for a \$5 donation from the hotel to a preselected organization (at no cost to the guest)



Hôtel Château Laurier Québec (English subtitles available)

- Covering box springs and making reusable bags from old bed covers that will be sent to the laundry, thus replacing single-use plastic bags
- Removal of all amenity kits from the rooms and availability at reception upon request



Auberge du Lac Taureau (English subtitles available)

- Rainwater collection for toilet flushing in common areas



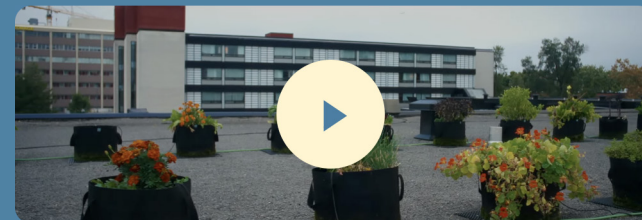
Hôtel Centre-Ville (English subtitles available)

- Replacing cotton pads with black washcloths
- Installation of rechargeable batteries in all doors



Manoir Belle Plage (English subtitles available)

- Cleaning only upon request during a stay (less cleaning, less wear on furniture, reduced use of cleaning products)



Ruby Foo's (English subtitles available)

- A proposal for guests to forego room cleaning in exchange for a \$5 donation from the hotel to a preselected organization (at no cost to the guest)

USEFUL TIPS

1

Replacing individual products with bulk or large-format products should not result in waste or loss of products, as the environmental impact of the product itself is generally greater than that of its container.

3

Each establishment is different. It is recommended to test actions on a smaller scale before implementing them across the premises.

- For example, a trial implementation of organic waste bins on one floor of guest rooms to assess the best logistics with housekeeping

2

In general, biodegradable, oxobiodegradable, or compostable plastic items are not good alternatives to conventional plastic. It is preferable to choose a reusable option or remove the item, if possible.

4

Changes in procedures that affect the level of service provided to guests will not be negatively perceived if the approach is clearly explained.

USEFUL RESOURCES

Guide for Selecting Water-Saving Equipment (faucets, showerheads, and toilets) (in French only): Look for the Watersense certification

<https://www.ecohabitation.com/guides/salles-de-bains/>

Downloadable visuals/pictograms for creating your own waste sorting posters (in French only):

<https://www.recyc-quebec.gouv.qc.ca/entreprises-organismes/performer/outils-guides-et-etudes/pictogrammes-signalisation/>

Network of symbiosis by region (in French only):

<https://synergiequebec.ca/>

Videos from the Travel Better Thanks to Circular Economy campaign:

https://www.youtube.com/watch?v=bVSe_YiSeXk

Produced by Stratzer, this tool was developed thanks to the collaboration and financial support of RECYC-QUÉBEC and the ministère du Tourisme, as part of the circular economy showcase project for the tourist accommodation sector.